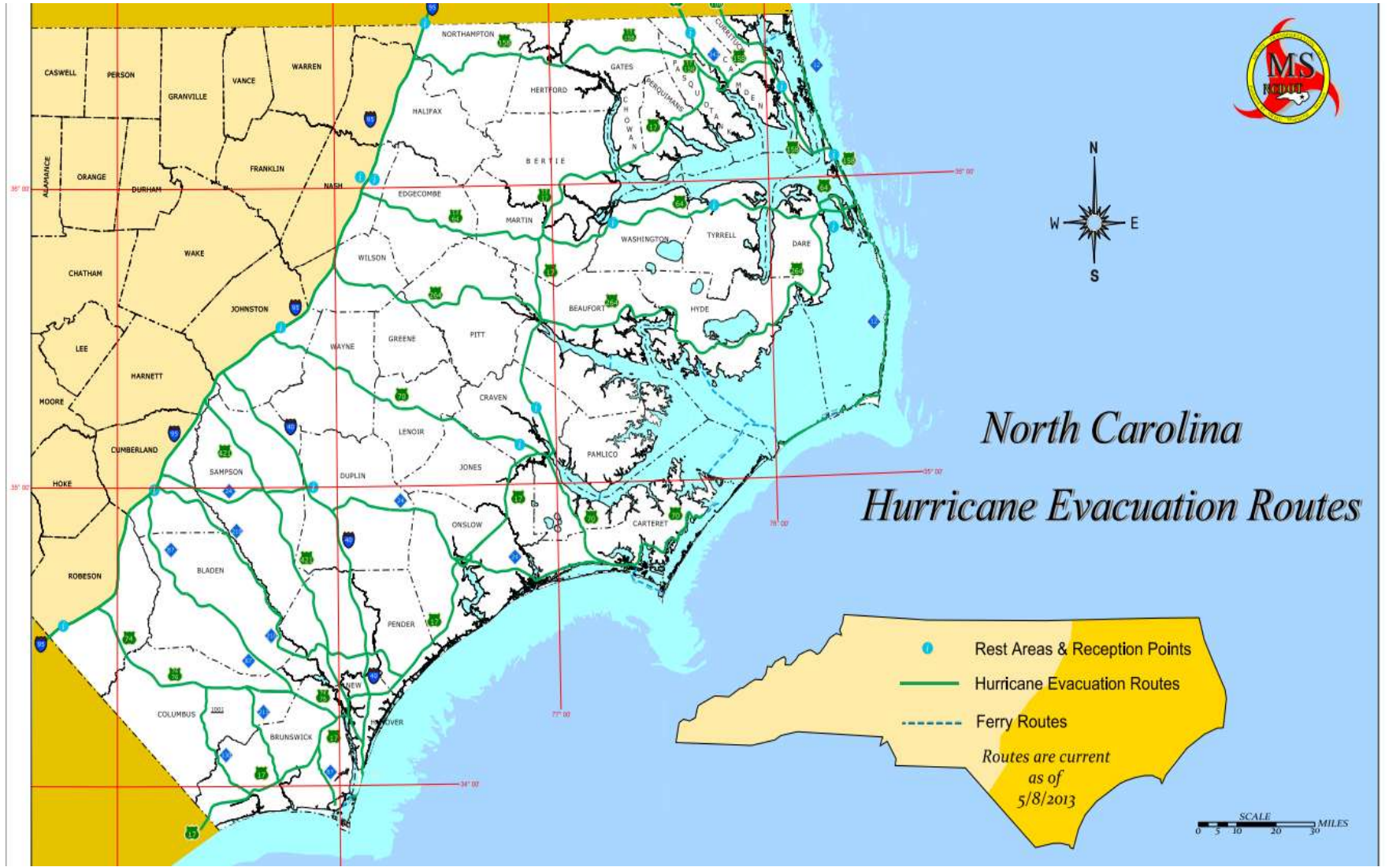


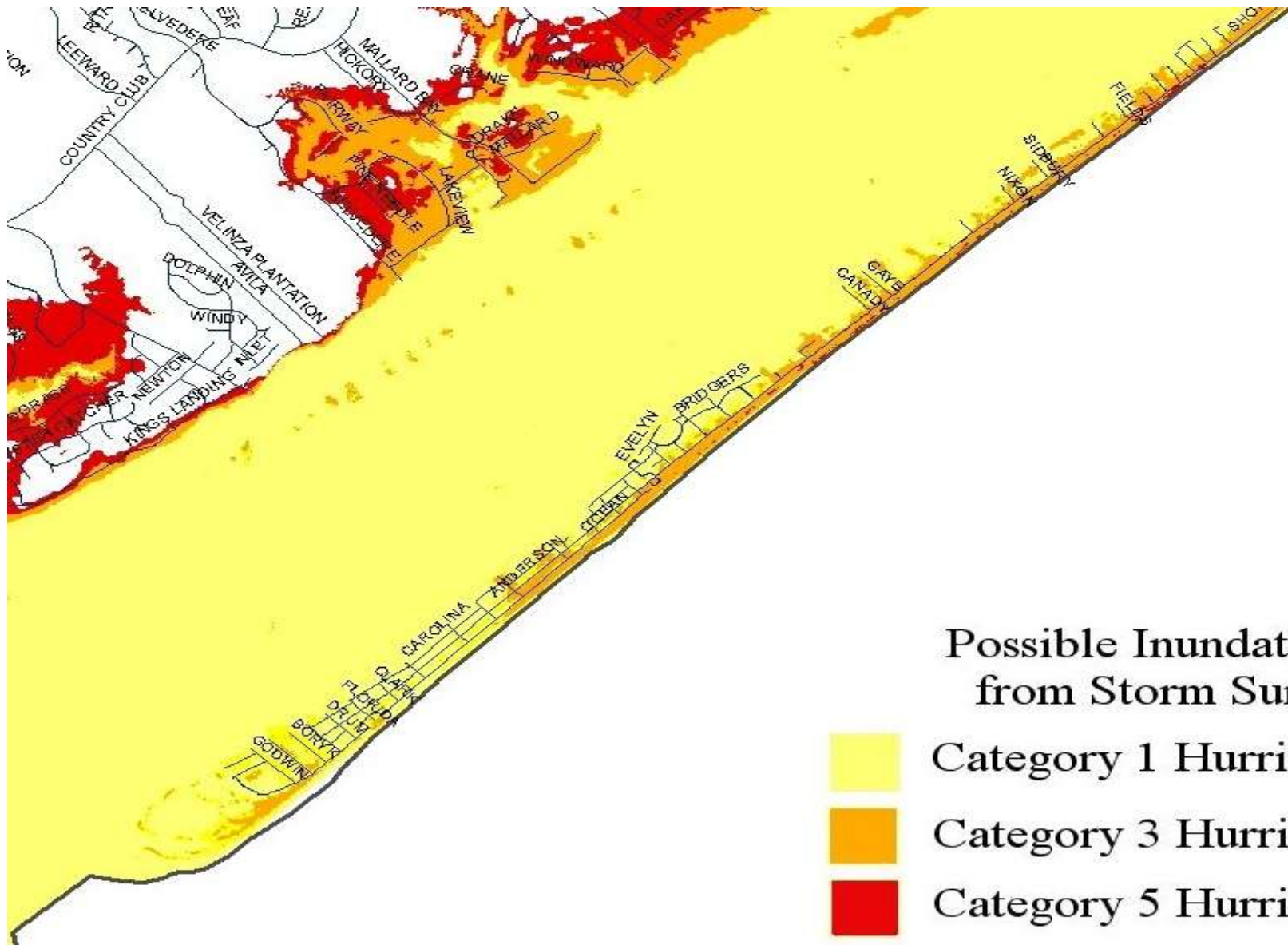
**Useful Flood Protection Maps**

- 1) North Carolina DOT Hurricane Evacuation Routes ..... 2
- 2) Inundation from Storm Surge Map ..... 3
- 3) Flood Hazard Area South-end of Town ..... 4
- 4) Flood Hazard Area Business District of Town ..... 5
- 5) Flood Hazard Area Middle of Town ..... 6
- 6) Flood Hazard Area North-end of Town ..... 7
- 7) Map of Sea Level Rise ..... 8
- 8) Town of Topsail Beach Annual Erosion Rate Update ..... 9
- 9) Town of Topsail Beach Zoning Map ..... 10

## North Carolina DOT Hurricane Evacuation Routes

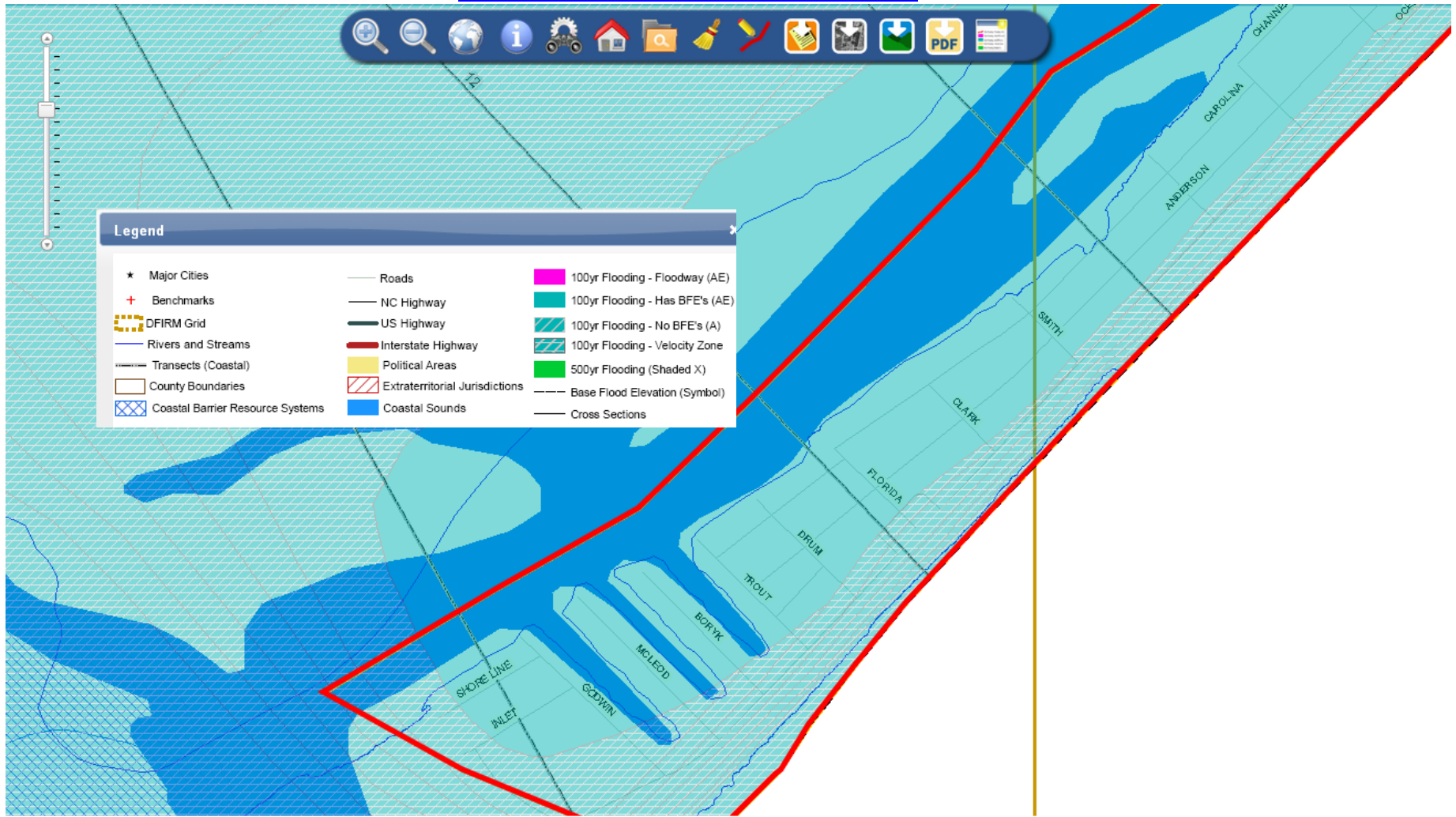


Possible Inundation from Storm Surge



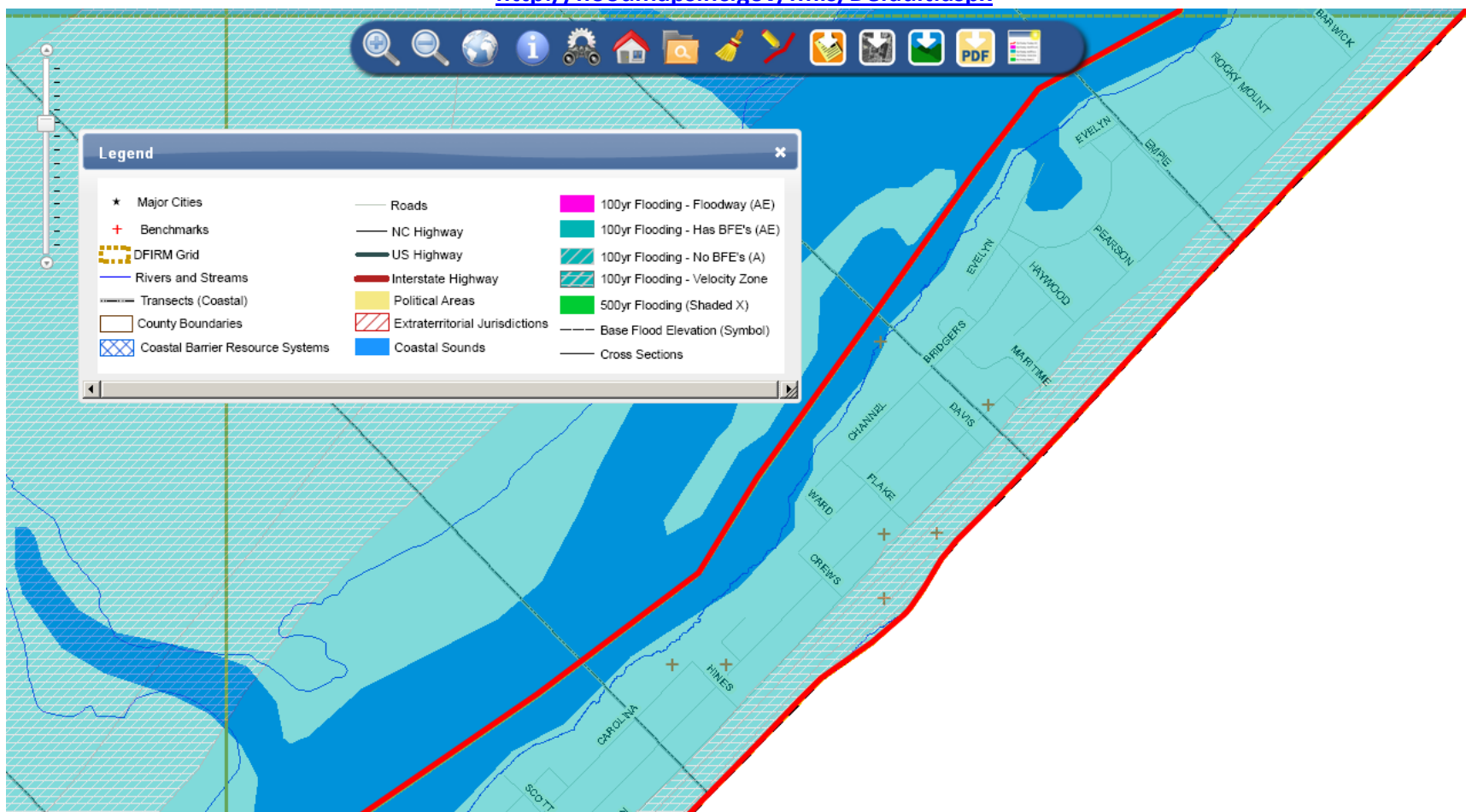
# Flood Hazard Areas (South end of Town – Map 1 of 4)

<http://floodmaps.nc.gov/fmis/Default.aspx>



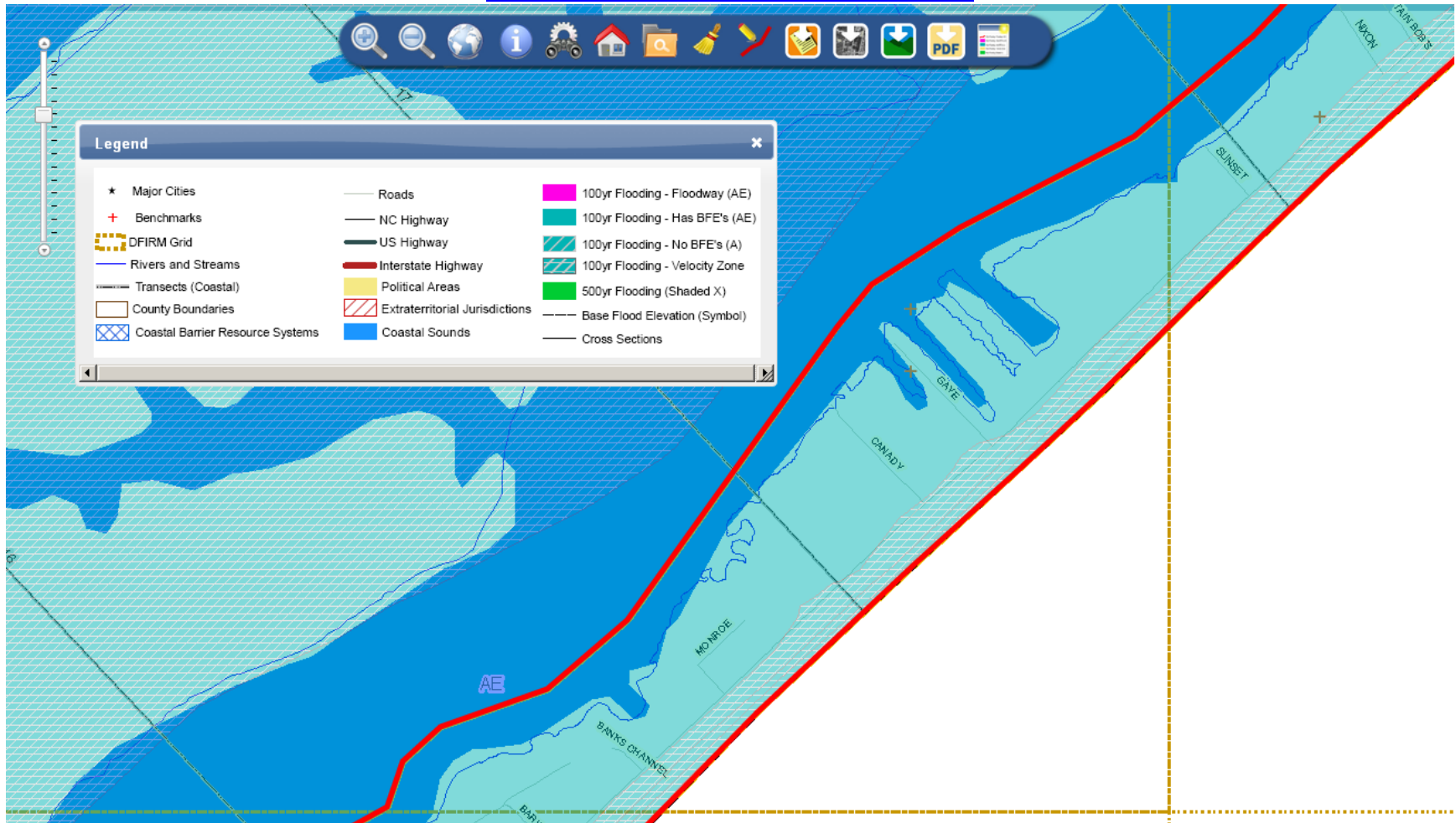
### Flood Hazard Areas (Business District of Town – Map 2 of 4)

<http://floodmaps.nc.gov/fmis/Default.aspx>



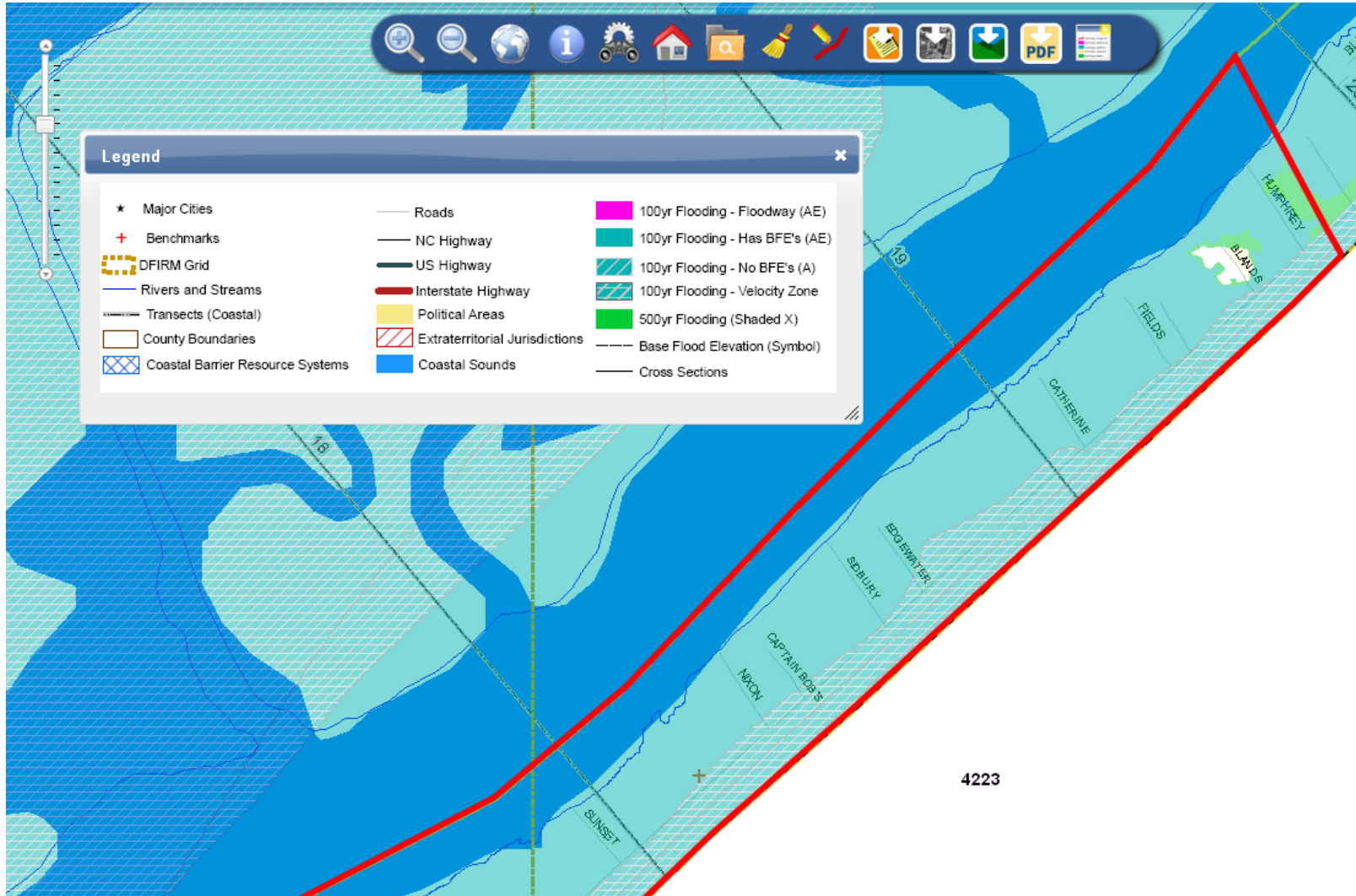
### Flood Hazard Areas (Middle of Town – Map 3 of 4)

<http://floodmaps.nc.gov/fmis/Default.aspx>



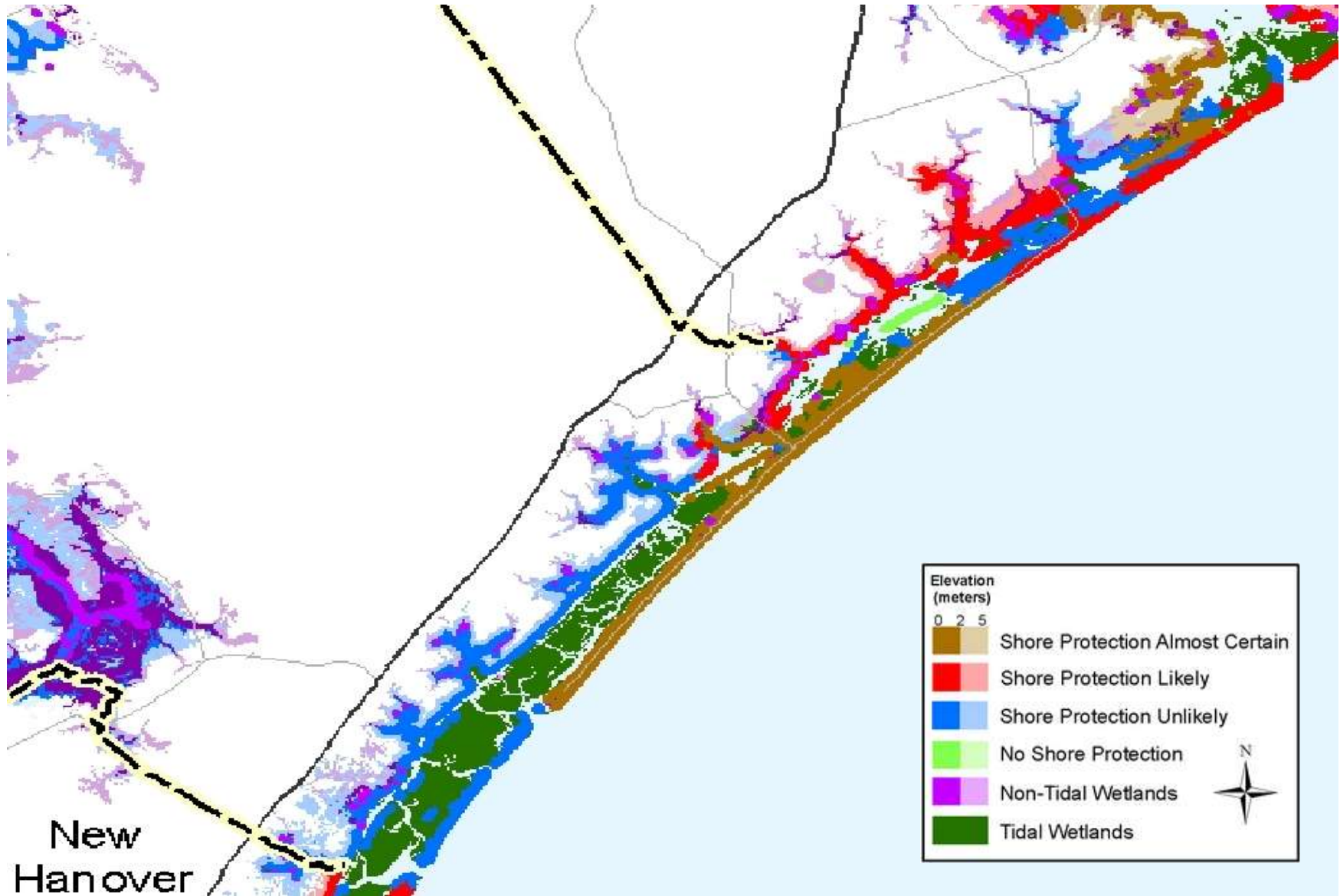
### Flood Hazard Areas (North end of Town – Map 4 of 4)

<http://floodmaps.nc.gov/fmis/Default.aspx>



**Map of Sea Level Rise**

[http://plan.risingsea.net/NC/North\\_Carolina\\_south\\_landscape.jpg](http://plan.risingsea.net/NC/North_Carolina_south_landscape.jpg)



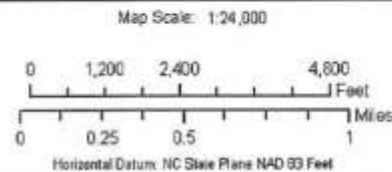


## Town of Topsail Beach Annual Erosion Rate Update



### 11 Long-Term Average Annual Erosion Rate Update at Topsail Beach, North Carolina

Setback Factors (feet/year)	2003 Setback Factors (feet/year)
-3.0	0.0 - 2.0
-4.0	2.1 - 3.0
-5.0	3.1 - 4.0
-6.0	4.1 - 5.0
-7.0	5.1 - 6.0
-8.0	6.1 - 7.0
-9.0	7.1 - 8.0
0	> 8.0
Setback Rate Factor Transition Boundary	Inlet Hazard Area
with Fill Project > 300,000 cubic yards	Photo: 2009 USDA NAIP



Setback Factors on this map represents long-term average annual erosion rates measured in feet per year. Shoreline segments that are accreting or have erosion rates less than two feet per year receive a setback factor value equal to 0.

The information presented here is not predictive, nor does it reflect short-term erosion potential. This map may not be suitable for property specific determination of erosion rates or setback factors near rate transition boundaries due to its small scale. For site specific determinations contact your CAMA Local Permit Official, or regional Division of Coastal Management field office.



400 Commerce Avenue  
Morehead City, North Carolina 28542  
1-888-4R-COAST

<http://www.nccoastalmanagement.com>

**Map No. Topsail Beach - 1 of 1**

Town of Topsail Beach Zoning Map

